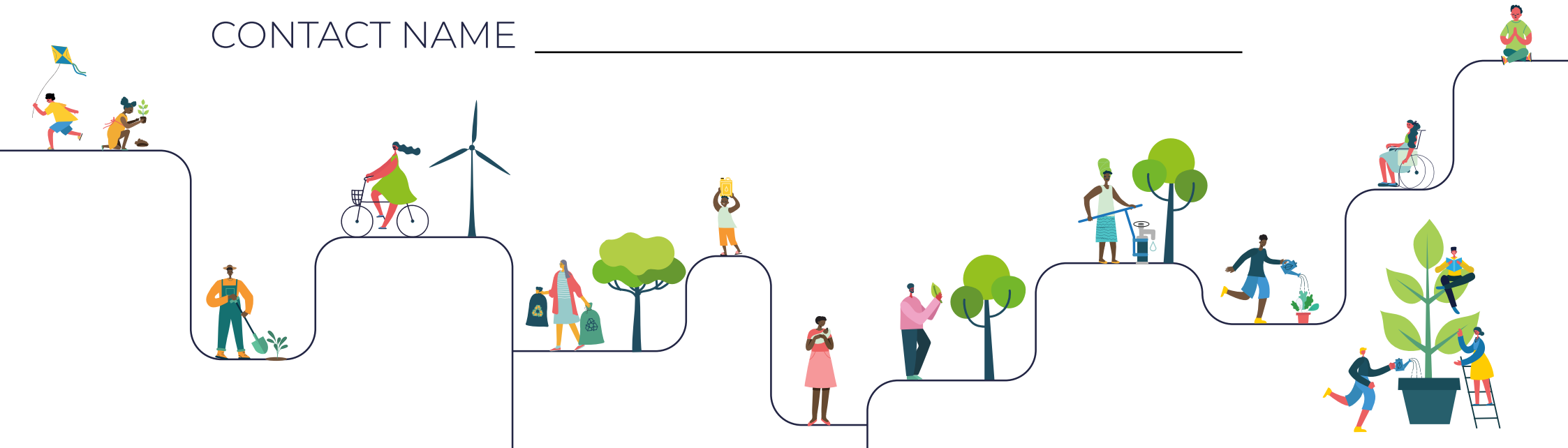


LiveSimply

SCHOOLS ACTION PLANNING FORM

NAME OF SCHOOL _____

CONTACT NAME _____



The **Live**Simply action planning form



Please refer to the **Live**Simply action planning guide for details on how to fill out this planning document.

GLOBAL	Description of action	Description of action	Description of action
	Faith input:	Faith input:	Faith input:
	Education input:	Education input:	Education input:
LOCAL	Description of action	Description of action	Description of action
	Faith input:	Faith input:	Faith input:
	Education input:	Education input:	Education input:
SCHOOL	Description of action	Description of action	Description of action
	Faith input:	Faith input:	Faith input:
	Education input:	Education input:	Education input:

Live Simply

Criteria for live simply: To take action towards living a simpler lifestyle including slowing down and finding time to pray and reflect, refusing and reducing on what we consume, spending more time on the simpler things in life including reflective time with family and friends, time in nature.

Brief description of main action:

How will you plan for a wider community engagement?

FAITH | LEARN | ACT

What faith-based resources will you use?

Include resources linked to Catholic Social Teaching, liturgies, prayers and other faith based materials.

What educational resources will you use?

These can include CAFOD educational resources, or other resources that provide a learning journey.

Live Sustainably

Criteria for live sustainably: To take action towards protecting God's creation through personal actions. This can include taking action on how much we use and throw away, supporting the work of eco clubs and other eco initiatives, taking environmentally positive action in the local community.

Brief description of main action:

How will you plan for a wider community engagement?

FAITH | LEARN | ACT

What faith-based resources will you use?

Include resources linked to Catholic Social Teaching, liturgies, prayers and other faith based materials.

What educational resources will you use?

These can include CAFOD educational resources, or other resources that provide a learning journey.

Live in Solidarity

Criteria for live in solidarity: To take direct action to help our global family. This includes campaign action to raise awareness or challenge structures that impact negatively on our global neighbours, fundraising to help communities in need, and other global actions that make a difference to our global family.

Brief description of main action:

How will you plan for a wider community engagement?

FAITH | LEARN | ACT

What faith-based resources will you use?

Include resources linked to Catholic Social Teaching, liturgies, prayers and other faith based materials.

What educational resources will you use?

These can include CAFOD educational resources, or other resources that provide a learning journey.

LiveSimply award form

To register for the **LiveSimply** award, please fill out the form below, and send in your completed action plan to the address below. Upon receipt of your registration we will send you a registration certificate for you to display in your school.

Name of school

Address

Headteacher

Contact Name

Email address

Date

Please email us a copy of your plan to schools@cafod.org.uk

**CAFOD Education team,
Romero House,
55 Westminster Bridge Road,
London SE1 7JB.**

Yes, I would like to join an email list for the **LiveSimply** award where I will receive updates, ideas, links to action and further support.

CAFOD will process information you provide to us on this form for the purposes of sending you resources for the LiveSimply Award. CAFOD will keep some personal details about you on our database so we can stay in contact with you enabling us to administer and manage the LiveSimply award efficiently.

You can change your communication preferences at any time by contacting us at cafod@cafod.org.uk or 0303 303 3030. CAFOD will never share your data for marketing. For details, see our privacy statement on www.cafod.org.uk/privacy